

[www.coffeecapsules.es](http://www.coffeecapsules.es)

We supply and manufacture compatible capsules  
with Nespresso\* and Dolce Gusto \*

PP capsules , biodegradables, compostables with and without barrier  
and made out of aluminium.



(\*) Brand Name with no relation with [www.coffeecapsules.es](http://www.coffeecapsules.es)

[www.coffeecapsules.es](http://www.coffeecapsules.es)

We supply and manufacture compatible capsules with  
Nespresso\* and Dolce Gusto \*

PP capsules , biodegradables, compostables with and without barrier and  
made out of aluminium.



(\*) Brand Name with no relation with [www.coffeecapsules.es](http://www.coffeecapsules.es)

We supply also all the films necessary made out of aluminium or compostable film and all the films for bags printed or unprinted.

The same for precutted lids.



(\* ) Brand Name with no relation with [www.coffeecapsules.es](http://www.coffeecapsules.es)

# Introduction

---

The company COFFEECAPSULES starts with the know how of different shareholders from different fields like industrial area, marketing and technical know how and in the same time with joint venture of one of the best coffee and tea manufacturer worldwide.

We can supply all kind of taste with our brand name, OEM or any other.

# Adress

---

**Adress:** Located in  
Calle SIETE Numero 25  
08860 CASTELLDEFELS (BARCELONA  
SPAIN  
General Manager  
Marco Steyrer  
Whatsapp: 0034607221252  
Web: [www.coffeecapsules.es](http://www.coffeecapsules.es)

# Activity

---

Actally we produce and fill monodosis capsules for TEA and COFFEE with the compatibility with generally all the coffee machines models from NESPRESSO \*.

Our capacity is about 18.000 capsulas per hour , this menas actually we can produce 20.000.000 capsules epr month.

Already adjusting new machines for bigger productions due to the increasing demand of the capsules.

# Cápsules [www.coffeecapsules.es](http://www.coffeecapsules.es)

---



Our target of COFFEECAPSULES system was to create a capsule which is suitable for tea and coffee and able to use in all the models of coffeemachines of NESPRESSO \* and offering the maximum quality and taste in the market.

# Desarrollo técnico cápsulas

---

The I+D department of COFFEECAPSULES found mainly 2 big difficulties.:

- 1) The big differences between the behaviour of the TEA and the COFFEE with different textures .



- 2) And the coffee machines NESPRESSO which works with a special reject system by preashure and a special temperature, very different to the normal use of TEA and COFFEE..



# Técnical developement of capsules

---

In order to solve the different problems we centered specially on the following different elements like:

## THE PRODUCT

**Filling:** After a lot of studies and tests we found out that it si very important the density of the coffee and tea and the quantity of filling in order that the best quality will be together with the preassure and the temperature of the Nespresso machines. All this was tested strictly.

**Mixture:** In order to get the best quality a lot of tests where necessary to make in order to get the best quality out of the best mixture of the different coffees and tea.

# Development of technical capsule

---

## 2) LA CAPSULE

**Material:** We need a material which can resist the temperature and pressure without deforming the capsule. A lot of tests were made with different weights of polypropylene until we arrived to the best combination.

Also the test of different aluminium lids with different embossing and thermosealing was necessary.

**Design:** One of the most important points was to produce the capsule as much as compatible with the Nespresso machines and because of this a lot of tests with different heights and measures were made until getting the best result.

# Characteristics of the capsule

The result of the capsules, closed and only one piece, compatible with Nespresso \* machines with a similar design.



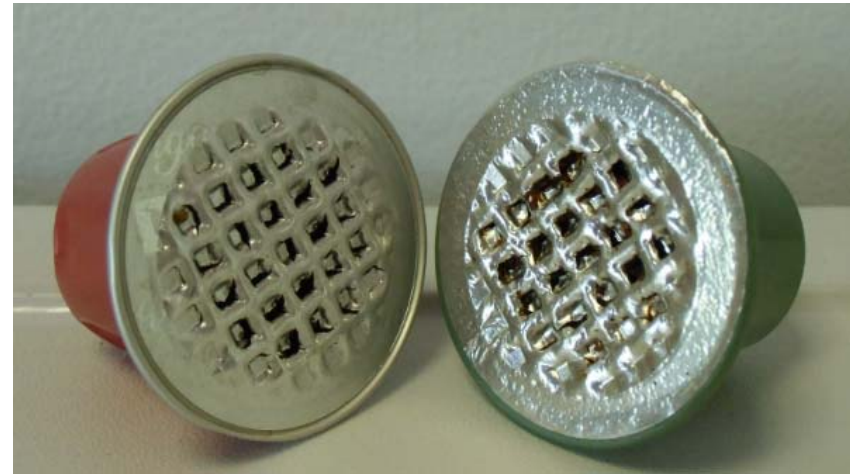
# Characteristics of the capsule

---

1. You put the capsule in the machine.
2. 3 holes were made in the bottom of the capsule.
3. The water goes inside the capsule via these 3 holes and circulates inside the capsule getting all the taste and flavour of the raw material.
4. The pressure of the water breaks the aluminium casing against the top mould and the coffee or tea comes out for drinking.

# Characteristics of the capsule

Something what you can see clearly on the attached pictures with used capsules:



# Characteristics of the capsule

---

COFFEECAPSULES was able to get that the capsule goes and works perfectly with all the Nespresso \* machines like :

Maestria



Pixie



Citi Z



Essenza



## Study of the behaviour of our capsule:

---

In order to get the best capsule, which will offer the best results a lot of tests were made with different models of coffee machines and different taste of coffee and tea.

An external company was making the test results for us COFFEECAPSULES with Nespresso \* coffee machines, getting different tests and results like :

- The insert of the capsule
- Going out and in of the water during the process.
- The process of production.
- Breaking of aluminium.
- Waste of the capsule after finishing the process.

# Study of the behaviour of our capsule

---

The results are :

## **The insert of the capsule in the machine:**

0= The capsule doesn't go in or it need help.

10= The capsule is perfectly located in the machine.

## **Outgoing of wahter previous :**

0= Loosing of wahter during the process.

10= Comes out perfectly coffe or tea during the process.

## **Outgoing of wather afterwards:**

0= Comes out wahter at the beginning and later coffe or tea.

10= Comes out directly the right coffee or tea during the process.



**Proceso de infusionado:**

0= The finished product is not good enough failing one of the process or any other problem.

10= The product is perfectly getting the quality needed.

**Breaking of aluminium:**

0= Doesn't break right the aluminium and the production is not right.

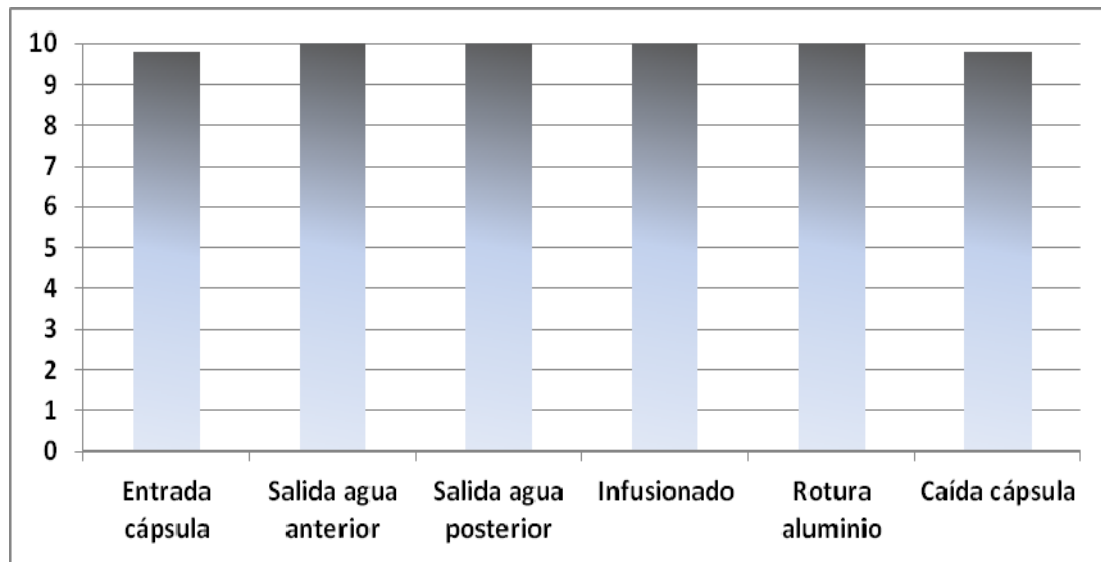
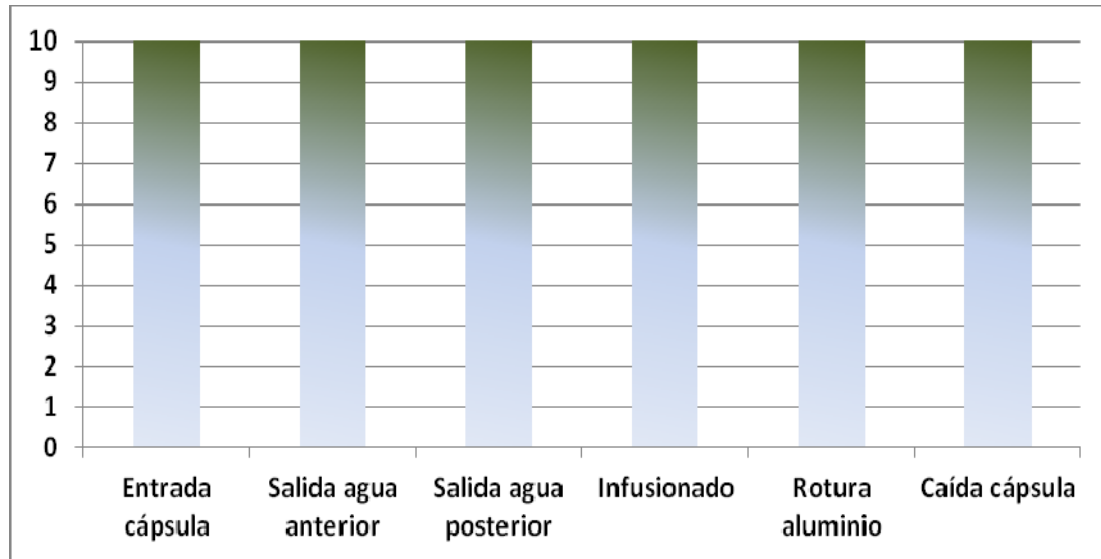
10= Aluminium breaks right with perfect cutting

**Falling out of the capsule:**

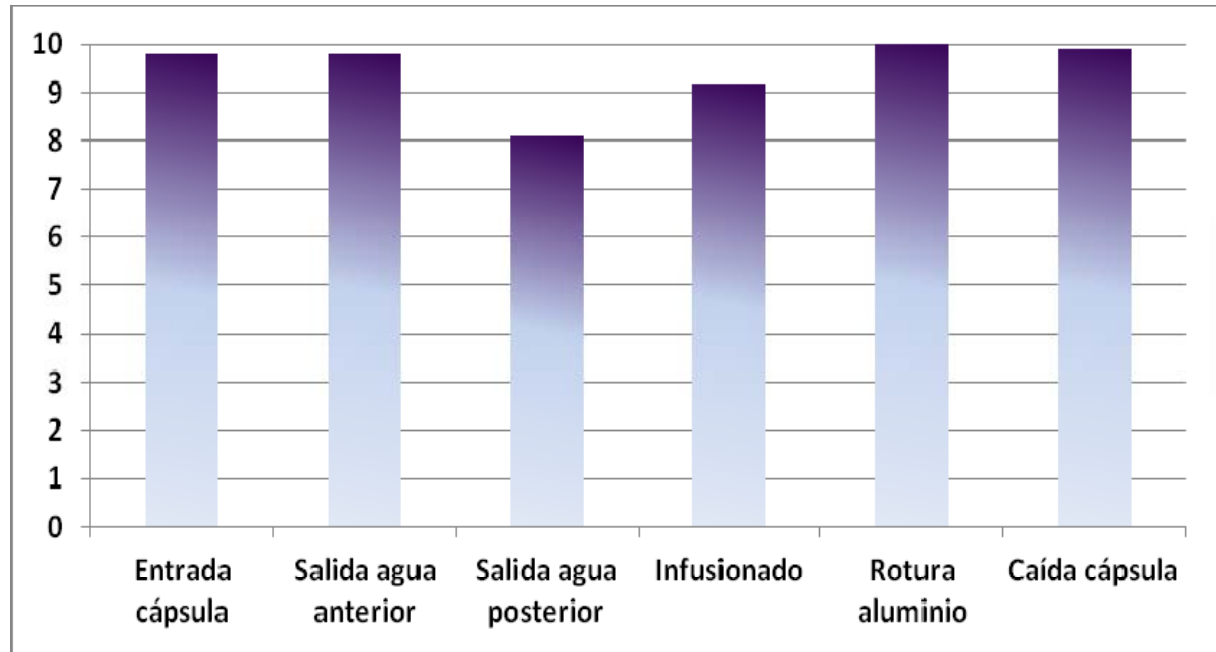
0=The capsule doesn't fall down perfectly after the process and opening..

10= The capsule fall down perfectly after the process and opening.

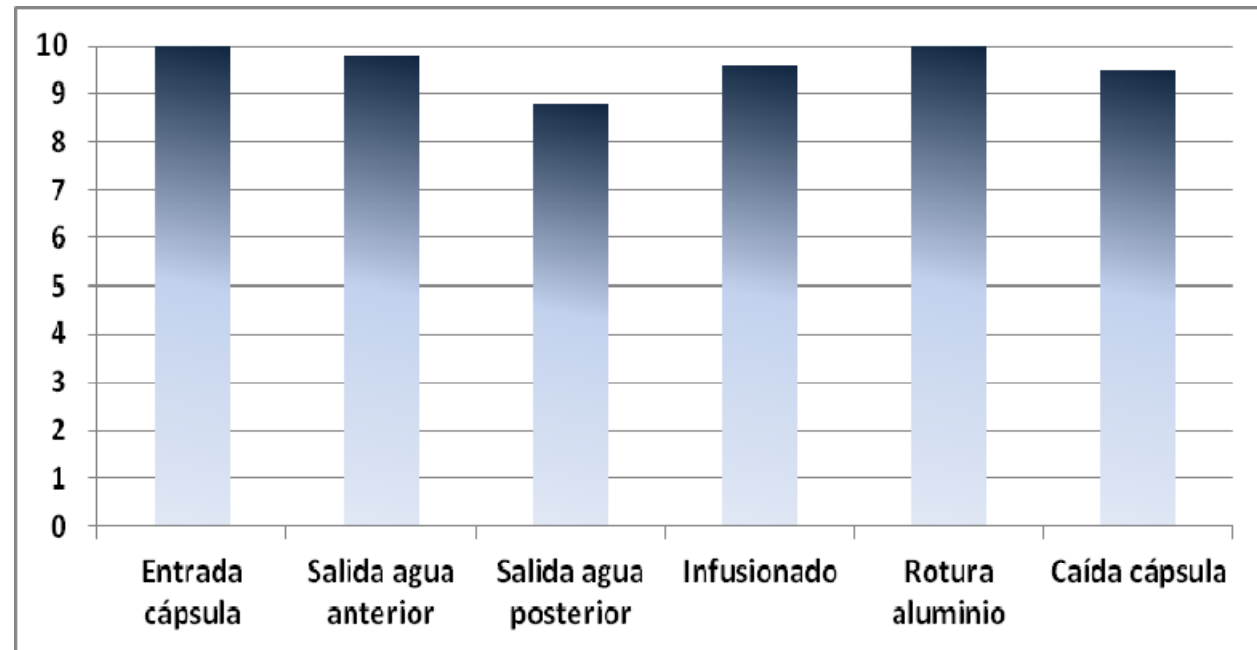
# LATÍSSIMA



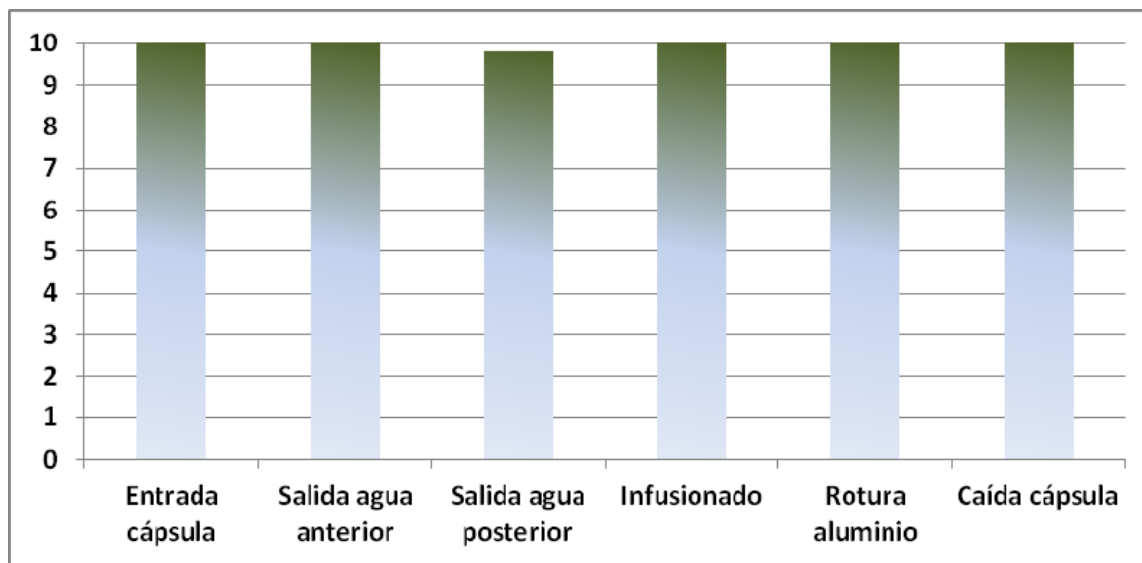
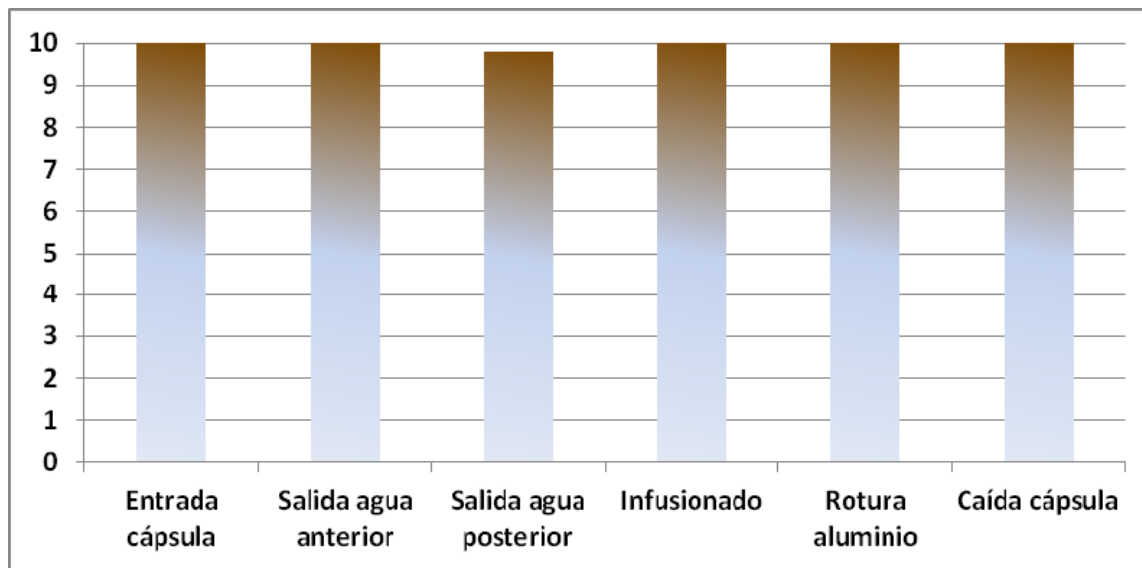
U



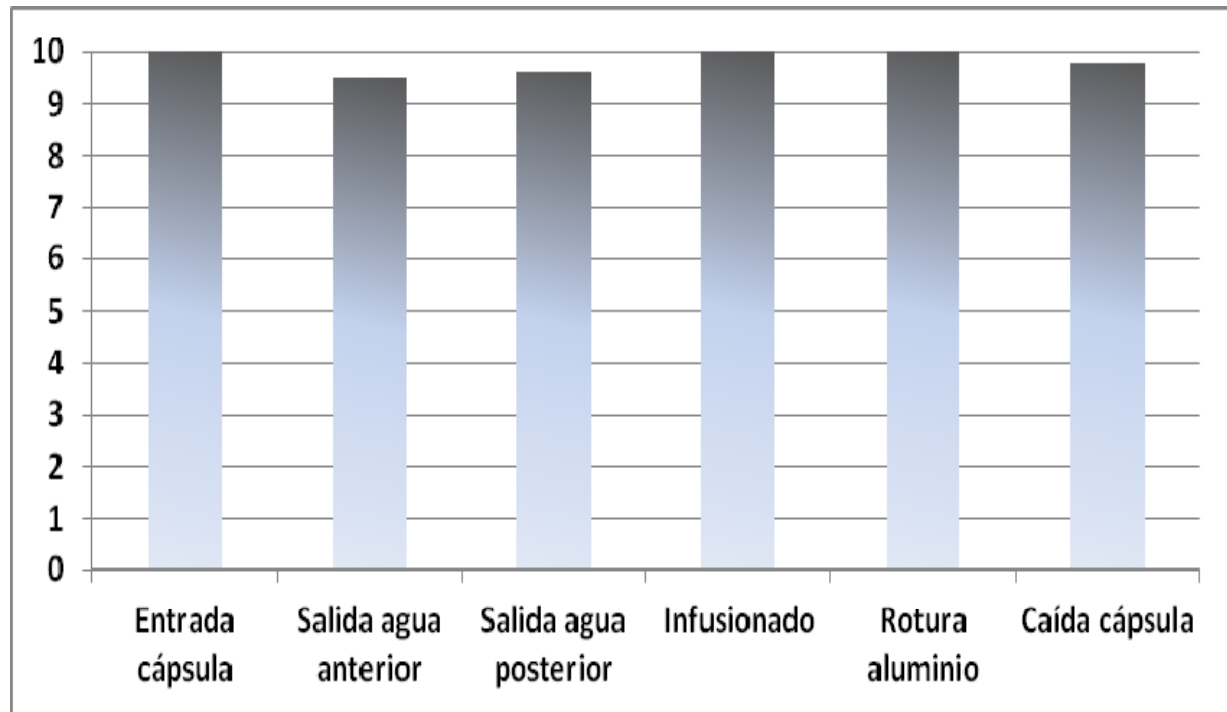
# PIXIE



# ESSENZA



# CITIZ



## Final study :

---

You can see that in all the results that the capsule of COFFEECAPSULES is compatible with all the Nespresso \* machines offering the best taste and quality.

# Following

---

We analyze each lot produced and we continue testing and increasing the quality every day .



## I + D

---

We COFFEECAPSULES are every day checking new versions of machines in order that the client will get the best quality [awww.coffeecapsules.es](http://www.coffeecapsules.es).

Our department of I+D is always checking any new trend and combination and trying to be on the top companies in the capsules in order to keep our clients in the best way.

# Laboratory

---

We in COFFEECAPSULES have our own laboratory or microbiologics in order to make all the necessary tests during all the process from getting the raw material till the end of the production taking care also about the cleaning after each flavour or tast

We also have all the machines of NESPRESSO \* and any new machine coming out to the market in order to adjust everything before it arrives to the client.



# OPTIONS of PACKAGING

---

Regarding the packaging we in COFFEECAPSULES are able to help you in the design of the boxes or any other need.

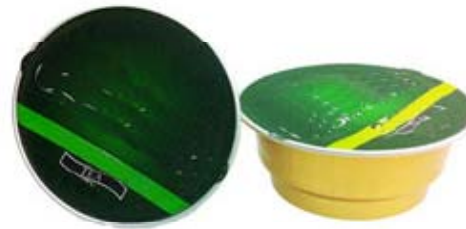
Thank you very much  
The COFFEECAPSULES TEAM



## Filling and sealing machine for different capsules

---

With our experience we can offer all kind of sealing and filling machines with the possibility to change formats and filling system.



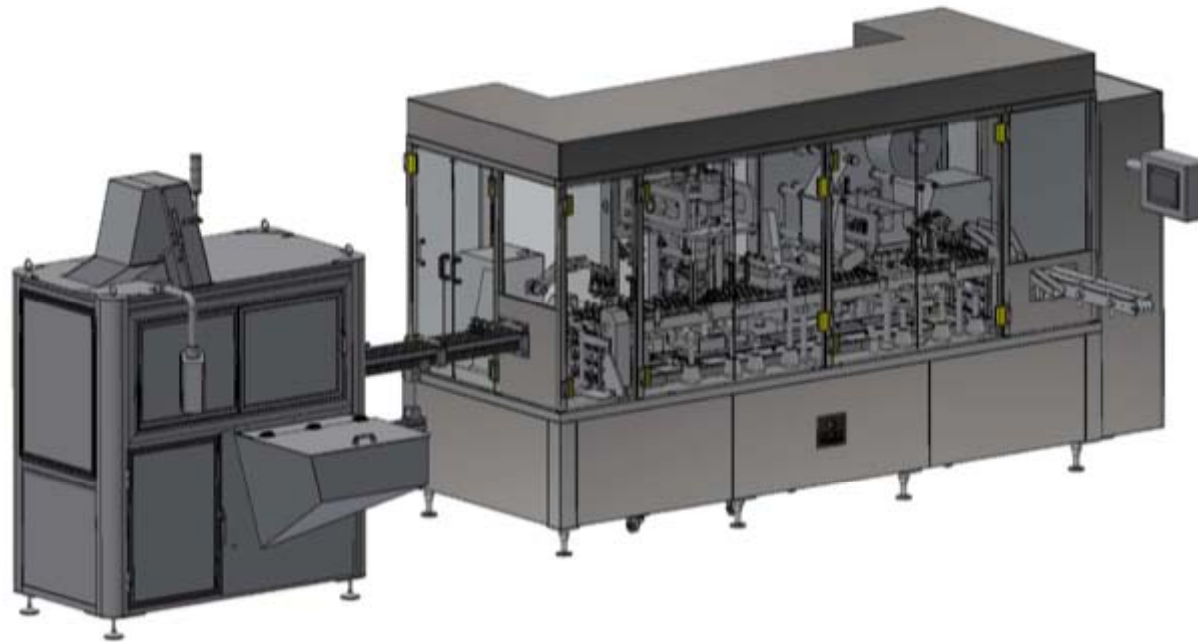
## Características – Technical Features

---

- Capsule filling and sealing machine, for liquids, soluble and coffee.
  - Extremely dynamic and flexible machine with individually removable godets to offer a fast change over
  - “ Docking station” for a quick product change
  - Speed from 100 to 250 bpm depending on the model.
  - Automatic capsule loading system.
  - Capsule Pick & Place system with placement into the godets
  - In-line weight control system.
  - Predisposition for nitrogen tunnel.
  - Closing station by heat shearing/welding or ultrasound in option.
  - Automatic rejecting system for wrong capsules.
- Capsules downloading with Pick & Place system from the godet.  
Touch-screen operator panel and Setting Menu.

# Filling and sealing machine

---

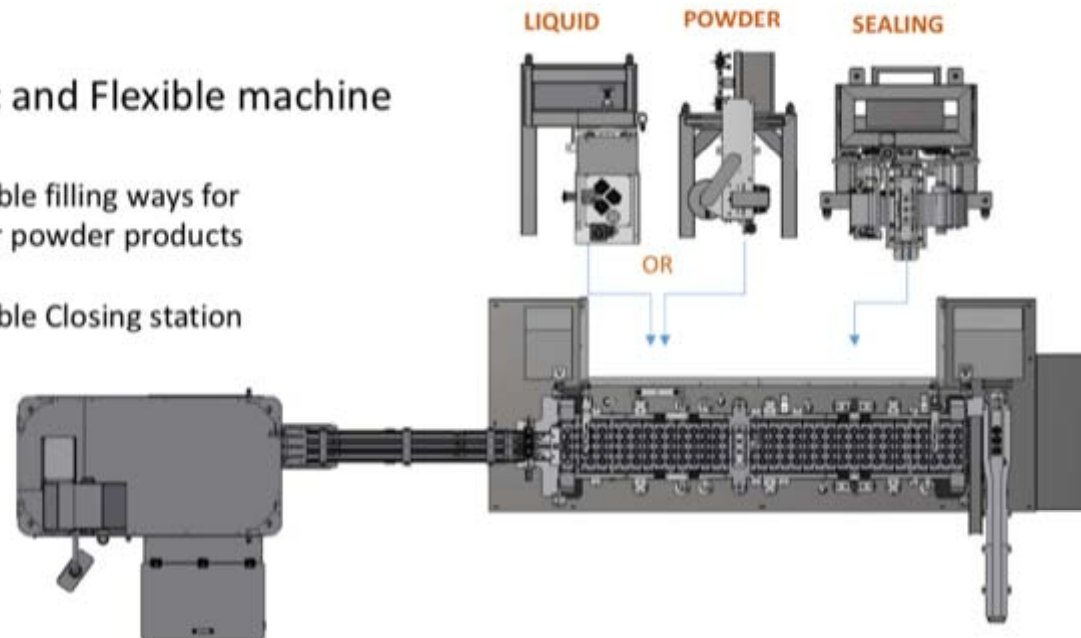


# Filling and sealing machine

---

## Dynamic and Flexible machine

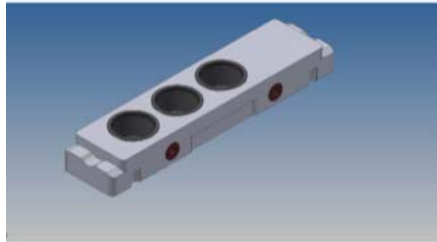
- Removable filling ways for liquid or powder products
- Removable Closing station



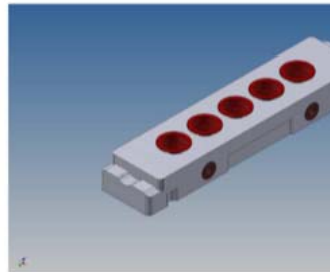


# Filling and sealing machine

---



**Individually removable godets  
to offer a fast change over**





# Filling and sealing machine

---

